



Pershore Road, Evesham, WR11 2LU

**SHELDON
BOSLEY
KNIGHT**

LAND AND
PROPERTY
PROFESSIONALS

Property Description

WELL-PRESENTED, TWO DOUBLE BEDROOM PERIOD PROPERTY WITH SOUTH FACING GARDEN

A well-presented two DOUBLE bedroom period home in the popular area of Hampton, close to Evesham Town Centre and local amenities,

The property comprises; entrance hall, dining room, living room, kitchen, rear porch and w.c..

Upstairs comprises two double bedrooms and family bathroom with separate roll top bath and shower.

The property also benefits from ample parking, generous sized SOUTH FACING garden and has open views of St Andrews Parish Church and church yard.

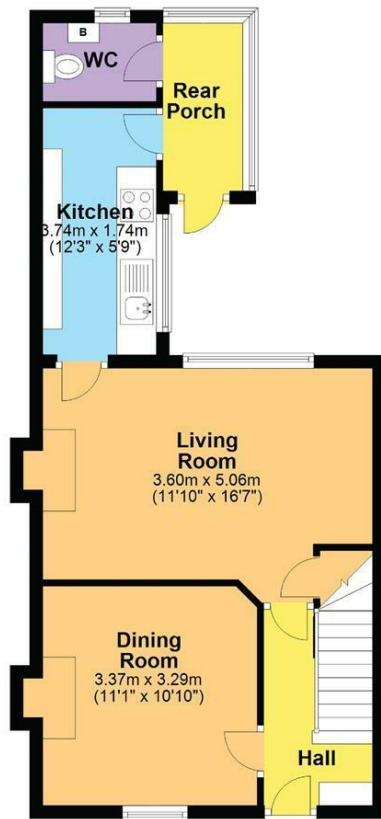






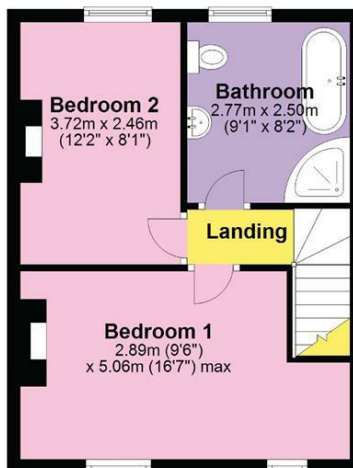
Ground Floor

Approx. 46.6 sq. metres (501.7 sq. feet)



First Floor

Approx. 34.0 sq. metres (365.5 sq. feet)



Total area: approx. 80.6 sq. metres (867.1 sq. feet)

DISCLAIMER - Floor plans shown are for general guidance only. Whilst every attempt has been made to ensure that the floorplan measurements are as accurate as possible, they are for illustrative purposes only.

Key Features

- PERIOD PROPERTY
- MID TERRACE
- TWO DOUBLE BEDROOMS
- WELL PRESENTED
- PARKING FOR TWO CARS
- PERIOD FEATURES
- CLOSE TO LOCAL AMENITIES
- EPC RATING - D
- SOUTH FACING GARDEN

Asking Price
£235,000

EPC Rating -

Tenure - Freehold

Council Tax Band -

Local Authority -